



Bulletin

International Association for Landscape Ecology

THE IALE EXECUTIVE COMMITTEE WISHES ALL THEIR MEMBERS HAPPY HOLIDAYS!

by Marion Potschin, IALE Secretary General (Marion.Potschin@nottingham.ac.uk)

Besides thinking about presents etc., the Holidays at this time of year are a time to wind down and reflect on a few things. In-between many other things, I will also reflect on my time as Secretary General for IALE international. I have already started by asking myself what we - the Executive Committee (EC) – have achieved since I joined in 2003, and what can still be improved, and would appreciate your feedback in the New Year. The most important thing we achieved so far, and still need to improve, is to **make processes and decisions within IALE transparent** for all members and also, where possible, include them in decision making. We have attempted to achieve this, by

- o Creating a **“Executive Committee Handbook”**, which Louis Iverson put a lot of effort into. All information on the current situation but also the history of events, processes, statutes etc. are included in 2 volumes. We are planning to finalise this soon and hopefully print it for the 2007 World Congress. This handbook will help to keep track of things, but also to carry information over from to new EC members.
- o Putting into process an **“Expression of Interest” Scheme** for IALE related events. The hosts and venue for the next IALE EU Congress was decided through this process. The next one will be a call for expression of interests to organise PhD courses/Master classes linked to IALE events. This will help to coordinate these courses, but also make sure that all IALE members/regions will have a chance to be active in IALE events.
- o The financial books are published and open to all members.
- o Revive the IALE Council again, spearheaded by Jesper Brandt as Chair of the Council.

We worked on the communication between the EC and the IALE members by

- o Improving the IALE homepage (thanks to Rob Jongman): A counter on the homepage shows that the visits have increased fundamentally with the new homepage.
- o I - as Secretary General – contact and inform all IALE members directly about updates and processes within IALE. However, I have only started this process recently and am still in the process of updating old email addresses.
- o Creating a general flyer on IALE, which will be updated every six months or when a major change occurs (such as having two new Vice Presidents on the board). The flyer can be downloaded from the IALE homepage.
- o Members from the IALE EC board try to attend regional meetings, especially when new chapters were set up etc.

We created a IALE publication system: besides the long established Bulletin (6 issues per year), we also started a IALE publication series (see homepage), and a publication system via the website is in process.

We have given more attention to the training and education side of Landscape Ecology and to our “early-career members”. In earlier days Jesper Brandt in Roskilde, Denmark has run several PhD courses, we now have a system established to have education and training courses linked to super-regional and international IALE Congresses. Through an Expression of Interest this should give the wider IALE membership the chance to organise such courses, and a working group on these aspects (LE-Net) was established earlier this year. Hopefully LE-Net can flourish and possible teaching material and funding can be coordinated and strengthened.

Well, so much for the good side, however I think there are still a few areas where we can improve our performance, such as:

- o We still need to clarify the structure and function of the EC and how this relates to the wider IALE body, and

continued from page 1 (Holiday greetings...)

communicate this more effectively to our members. I think for some people it is still not clear what all they get out of their contribution to IALE international.

- o Getting more members actively involved in IALE, such as voting, contributing to the bulletin, giving feedback, etc.
- o We could also intensify our public relations in terms of promoting IALE and Landscape Ecology.



IALE WORLD CONGRESS 8-12 JULY 2007: CALL FOR SYMPOSIA AND WORKSHOP PROPOSALS

ALL information on: <http://www.iale2007.com/>

In 2007 the International Association for Landscape Ecology (IALE) will have its 25th anniversary. The 7th World Congress will be held in that year and returns to the continent where it was founded. However, now in the modern Europe with old and new chapters here and in other continents the congress will be a great opportunity for landscape scientists from the whole world to share their ideas.

The scientific concepts and tools that started to be developed 25 years ago are now generally applied in research on sustainability, biodiversity, land use change, conservation planning, ecological networks, and global change. They have also been used to set national biodiversity programmes, e.g. in the UK, the Netherlands and Slovakia.

The congress will bring together 25 years of achievements in Landscape Ecology and will focus on the scientific principles and their practical applications to conservation planning, land and water management, and land-use planning both now and in the future. The discussions will show the increasing importance of remote sensing and geographic information systems, spatial statistics and modelling at the present day. The congress will also demonstrate how landscape ecology is playing an increasingly important role in spatial planning in terms of landscape and biodiversity.

The congress will offer

- o A world review of Landscape Ecology
- o Symposia with presentations of key topics
- o Open sessions with papers covering topics not included in the symposia
- o Workshops for brainstorming on potential new topics
- o Short presentations for early career scientists and others who wish to stimulate discussions
- o Poster sessions
- o A final summary of the key conclusions of the symposia the organisers
- o Identification of future themes and key issues in the final round table discussion

- o Discussion of European policy issues associated with Landscape Ecology
- o Documentation of the proceedings by books of papers delivered at the conference and a subsequent substantive book.
- o A lively social programme
- o Conference excursions
- o An open day at the worlds largest centre of landscape ecology

Programme and Call for Symposia, workshops, short presentations and posters

In the Congress there will be four types of presentations

1. Symposia, which will be either related to the meeting theme or address newly emerging topics. A one page outline is required as described in the official website. Deadline 1 March 2006 for discussion at the Scientific Committee Meeting on 13 March 2006
2. Workshops. These will be more informal and can be brainstorming. They will especially concern topics that may become important in future. Deadline 1 September 2006. Decisions will be made by the Scientific Committee on 12 September.
3. Short presentations. These should be linked to the posters and will be five minutes only Although originally intended for early career scientists, anyone is invited who wishes to use this opportunity. Deadline 1 September 2006. Decisions will be made by the Scientific Committee on 12 September.
4. Posters are invited. Deadline 1 September 2006. Decisions will be made by the Scientific Committee on 12 September

Detailed information on the format and instructions for proposals as well as worked examples can be found at the congress website: <http://www.iale2007.com>. All reactions should be sent through the website.

The **provisional time schedule** for the preparation of the congress is as follows:

March 1st 2006: deadline for proposals for Symposia

March 15th 2006: Scientific Committee meets and decides on symposium. Instructions for abstracts sent to Symposium organisers in the week after that.

September 1st 2006: Deadline for symposium organisers and individual authors to submit detailed programmes and abstracts for presentations

September 1st 2006: Deadline for workshop, posters and short presentation proposals

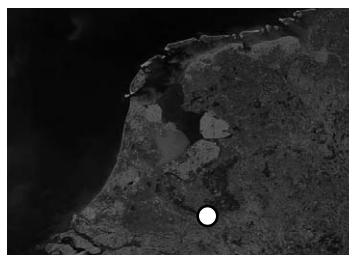
September 12th 2006: Review of abstracts for contributions and proposals for workshops and posters

October 2006-January 2007: Period of writing paper by the presenters/authors

February-March 2007: Period of reviewing papers and feedback to contributors

May 2007: Papers to the printer

July 1st: Proceedings printed



A world congress - in the middle of the most beautiful places in the Netherlands!

from: visibleearth.nasa.gov

Provisional Programme

Sunday, July 8, 2007	
17:00-19:00	Arrival Registration and reception supported by the Municipal Council of Wageningen
Monday, July 9, 2007	
9:00 – 9:30	Official opening with an Introduction by the Minister of Agriculture and Nature. Welcome IALE president, practical announcements.
9:30 – 10:45	Four speakers will present state of the art in landscape ecology in regions of the world and potential future directions. The details will be discussed with the invited speakers.
Plenary 1	Asia & Oceania
Plenary 2	Europe and Africa
10:45 – 11:15	Break
Plenary 3	North America
Plenary 4	South America
12:30 – 14:30	Lunch
14:30 – 16:30	Parallel sessions (Symposia)
16:30 – 17:00	Break
17:00 – 18:00	Parallel sessions (5-Minutes talks & Posters)
18:00 – 19:00	IALE Council meeting (national representatives and working group leaders)
18:00 - 19:30	Poster session with informal drinks
Tuesday, July 10, 2007	
9:00 – 10:00	Plenary: Joining the Past with the Future by invited speaker
10:00 – 10:30	Break
10:30 – 12:30	Parallel sessions (Symposia)
12:30 – 14:30	Lunch,
13:00 - 14:00	IALE General Assembly
14:30 – 16:30	Parallel sessions (Symposia)
16:30 – 17:00	Break
17:00 – 18:00	Parallel sessions (Workshops & Posters)
20:00	Conference dinner
Wednesday, July 11 2007	Local excursions: eg the Rhine project, Velduwe brook systems, City planning and local nature/landscapes, There also will be an open day at Alterra, Green World Research Centre and Wageningen University
Thursday, July 12, 2007	
9:00 – 10:00	Plenary: presentation of the New President of IALE
10:00 – 10:30	Break
10:30 – 12:30	Parallel sessions (Symposia)
12:30 – 14:30	Lunch
14:30 – 16:30	Plenary: presentation of the summaries of the Symposia
16:30 – 17:00	Break
17:00 – 18:00	Plenary: Round table discussion with facilitator
18:00 - 18.15	Plenary: Summing up (Past President)
20:00	Free evening, social event
Friday, July 13, 2007	Post conference excursions, Green heart of Holland, urban ecology, National Ecological Network, Delta works, Dune systems, Wadden sea. Polders and new nature.

Why Wageningen?

- o An efficient place to hold the conference with professional organisers and support from Alterra
- o Wageningen is a convenient centre to meet: <http://www.wageningen.nl>
- o The largest centre for environmental research in Europe: <http://www.alterra.wur.nl/UK/>
- o Within about one hour by train from Schiphol Airport with intercontinental flights to all the world and cheap European connections.
- o A wide range of accommodation types available and prebookings have been made

What can Wageningen offer?

- o Ready access by foot and bicycle to traditional Dutch cultural landscapes; bike hire will be arranged
- o Small friendly University town with twice weekly open market
- o Thirty bars and café's, many with outside seating so that delegates can enjoy the European "café culture". Fifteen restaurants e.g. Balkan, Spanish, Greek, Japanese and Chinese
- o A guide to Wageningen facilities will be provided
- o Under an hour to museums: (Kröller-Müller (van Gogh), Modern Art (Arnhem), Archeology (Nijmegen) and the Arnhem landings (A bridge too far) (Arnhem)
- o One hour to Amsterdam with its world famous cultural heritage of canals museums and buildings
- o Just over an hour to Rotterdam with the second largest harbour in the world
- o Two hours to the beaches of the North Sea coast
- o Three hours to Maastricht, Gent, Antwerp and Brussels
- o Four hours to the forests of the Ardennes and the vineyards of the Mosel valley

The IALE Bulletin is distributed six times a year to the members of the IALE. The IALE - International Association for LandscapeEcology- was founded in 1982 to promote communication between scientists, planners and interdisciplinary scientific research. IALE Executive Committee: **President:** Bob Bunce 2003-2007; ALTERRA Green World Research, Wageningen UR, Postbox 47, 6700AA Wageningen, The Netherlands, bob.bunce@wur.nl; **Secretary General:** Marion Potschin 2003-2007, School of Geography, University of Nottingham, Nottingham NG7 2RD, Marion.Potschin@nottingham.ac.uk; **Treasurer:** Rob Jongman 1995-2007, ALTERRA Green World Research, Wageningen UR, Postbox 47, 6700AA Wageningen, The Netherlands, Rob.Jongman@wur.nl or rob.jongman@planet.nl; **Past President:** Richard J. Hobbs 2003-2007, School of Environmental Science, Murdoch University, Murdoch, WA 6150, Australia, rhobbs@essun1.murdoch.edu.au; **Vice Presidents:** Louis R. Iverson 2003-2007, USDA Forest Service, 359 Main Rd., Delaware, OH, 43015, USA, liveron@fs.fed.us; Nobukazu Nakagoshi 2003-2007, Hiroshima Univ., Dept of Environmental Studies, 1-7-1 Kagamiyama, Higashi-Hiroshima 739-8521, Japan, nobu@hiroshima-u.ac.jp; Maria Kozova 2005-2009, Comenius University in Bratislava, Faculty of Natural Sciences, MI. dol. B-2, 842 15 Bratislava 4, Slovakia, kozova@fns.uniba.sk; Sandra Luque 2005-2009, Cemagref - Institute for Agricultural and environmental engineering research, 2, rue de la papeterie, BP 76, F-38402 St-Martin-d'Herès, cedex, France, sandra.luque@cemagref.fr; **Bulletin Editor and Deputy Secretary General:** Felix Kienast 1999-2007, Swiss Federal Institute of Forest, Snow and Landscape Research, Division of Landscape Dynamics and Management, 8903 Birmensdorf, Switzerland, felix.kienast@wsl.ch; **Chairman of Council:** Jesper Brandt 1995-2007, Roskilde University, P.O. Box 260, DK 4000 Roskilde, Denmark, brandt@ruc.dk.

IALE on the Internet: IALE International: www.landscape-ecology.org

continued from page 3 (World congress)

- o Train connections to the whole of Europe, high speed trains from Arnhem to Germany, Austria and Switzerland and from Rotterdam to Brussels and France

The conference venue was chosen because

- o It provides superb audio/video facilities with service support in custom built sound proof theatres
- o Access directly and through video links for all participants to the plenary sessions
- o Eight separate theatres for simultaneous presentations in symposia and workshops
- o Access to the posters throughout the conference
- o There is a suitable room for the final presentations and round table discussion
- o On site catering facilities throughout the congress

MEETINGS

Advances in Forest Landscape Modeling: Approaches, Standardization, Validation, and Application

(June 20- 30 2006, Beijing)

Purposes of the Workshop

The purpose of the workshop is to bring together world experts to evaluate the history and development of forest landscape models (FLMs), the new challenges, application of FLM's, and new analytical methods that are needed. By bringing together model developers and users with diverse social and cultural backgrounds, a workshop can facilitate the exchange of ideas and rapidly advance the science of FLM's.

This workshop will make it possible for forest landscape modelers in Asia to demonstrate the achievements they have made and the challenges they are facing. The workshop also will allow world experts to understand the forest management questions unique to Asia and to share their expertise.

Objectives of the Workshop

The workshop presentations and discussions will focus on the following areas.

- 1) Presentation and discussion of new approaches and recent developments related to FLM's.
- 2) Model evaluation— approaches and methods for analyzing spatial and nonspatial uncertainties and sensitivities.
- 3) Model validation—approaches and methods.
- 4) Model reusability, standardization, and interchangeability.
- 5) Demonstration of model applications, including the work of planners and managers using FLM's to assist in decision making.

For more information, check the workshop website: <http://www.landscape.ac.cn>

June 14-16, 2006

Landscape change Learning from the past - visions for the future.

Tromsø, Norway

More information: <http://www.njf.nu/>

October 4 - 7, 2006

Implementation of Landscape Ecology in the new and changing conditions. 14. Int. Symposium on Problems of Landscape Ecological Research. Institute of Landscape Ecology, Slovak Academy of Sciences, Stara Lesna, High Tatras Mts., Slovakia.

More information: <http://www.uke.sav.sk/>

June 16-18, 2006

3rd Conference of IALE Asia-Pacific Region: INTERNATIONAL CONFERENCE ON ECOLOGICAL RESTORATION IN EAST ASIA, Osaka, Japan

This meeting will enhance exchange of information on theoretical concepts in environmental conservation and restoration, and takes a leadership role in establishing effective techniques for their application.

More information: <http://www.soc.nii.ac.jp/jsrt/ICLEE/index.htm/>

May 29-31, 2006

The Ecosystem Approach of the Convention on Biological Diversity, Kiel, Germany

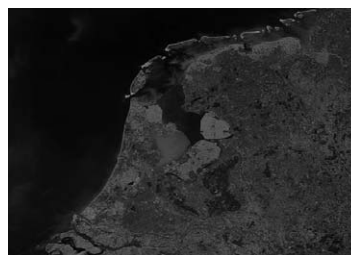
More information: http://www.ecology.uni-kiel.de/salzau_workshop2006/

March 28-April 1, 2006

US-IALE 2006 Annual Symposium. World conference to various themes of ecological restoration. Bahia Resort Hotel, San Diego, Cal., USA.

The United States Regional Association of the International Association for Landscape Ecology (US-IALE) will hold its 2006 annual symposium in San Diego California from Tuesday March 28 to Saturday April 1, 2006. The meeting will be held at the Bahia Resort Hotel in the Mission Beach area of San Diego. Preconference workshops and business meetings on Tuesday will be followed by plenary and concurrent sessions on Wednesday, Thursday morning, and Friday. Field trips will be on Thursday afternoon and Saturday (post-conference). The Local Organizing Committee Chair for the meeting is Janet Franklin, Department of Biology, San Diego State University. A meeting Web site is under construction and will be available by Summer 2005. Please check the US-IALE Web page for a link to the meeting Web site. If you have any questions please send email to Janet Franklin (janet@sciences.sdsu.edu).

More information: <http://www.usiale.org/>



See you 2007 in the Netherlands!

from: visibleearth.nasa.gov